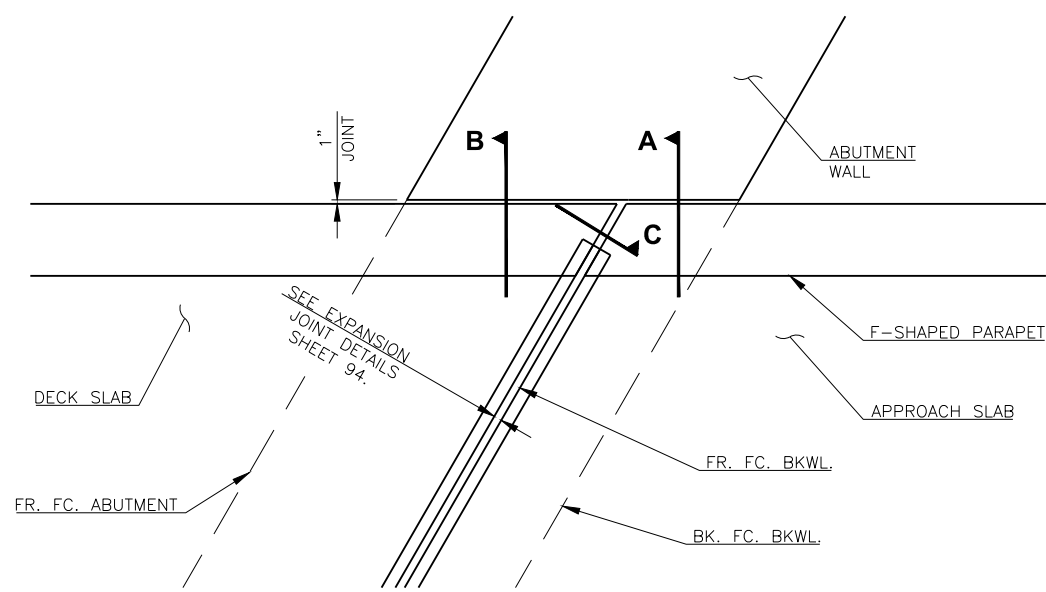
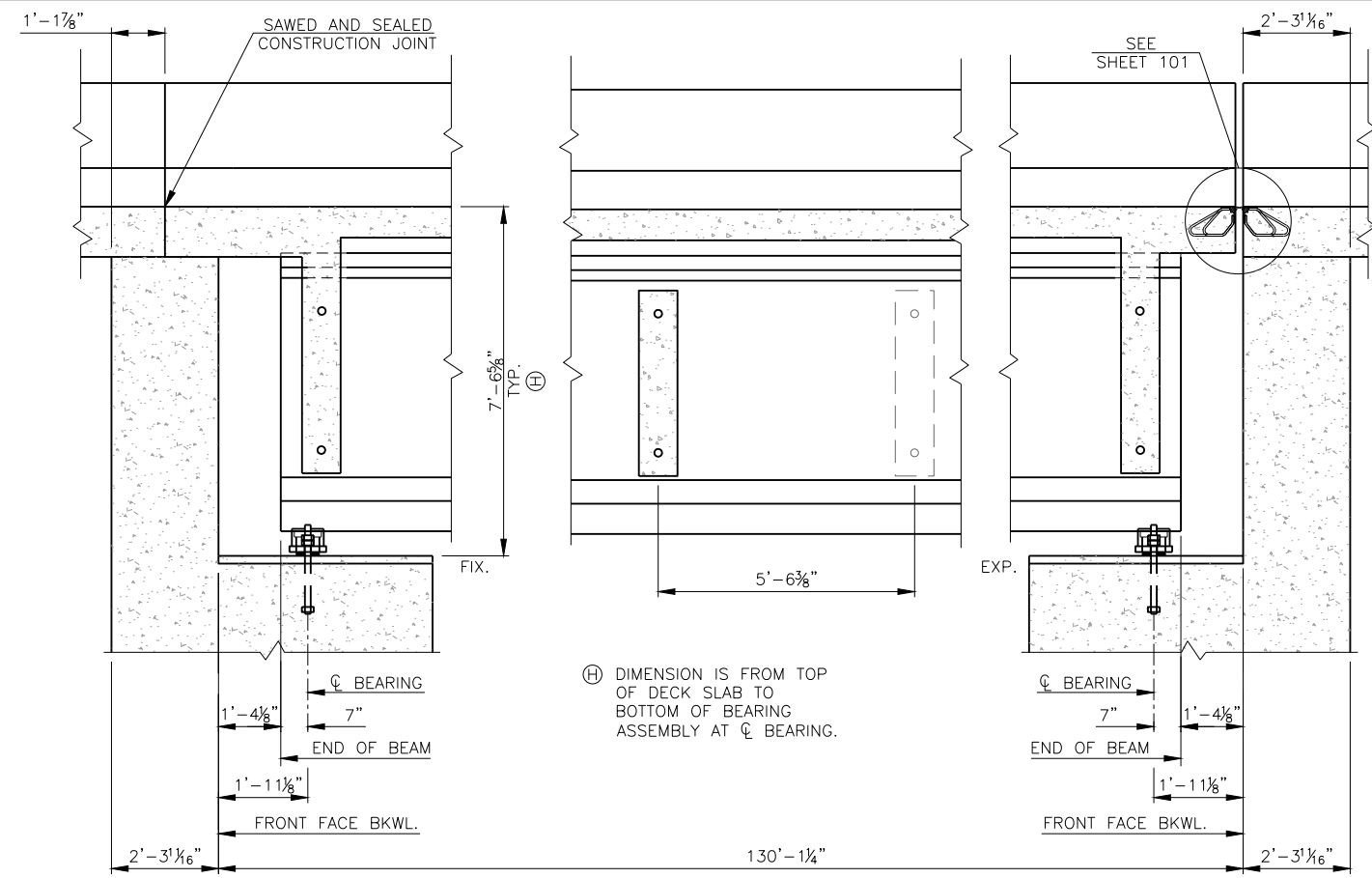


DESCRIPTION	REVISIONS	DATE



PARAPET, SLAB, AND ABUTMENT JOINT PLAN AT ABUTMENT NO. 2

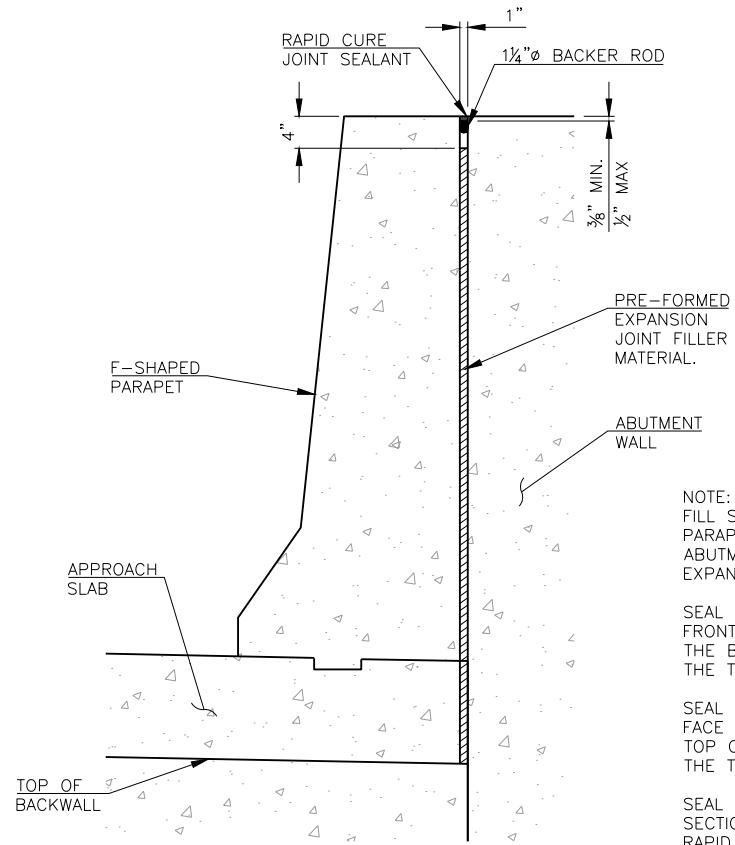


ABUTMENT NO. 1

INTERMEDIATE DIAPHRAGM

ABUTMENT NO. 2

LONGITUDINAL SECTION



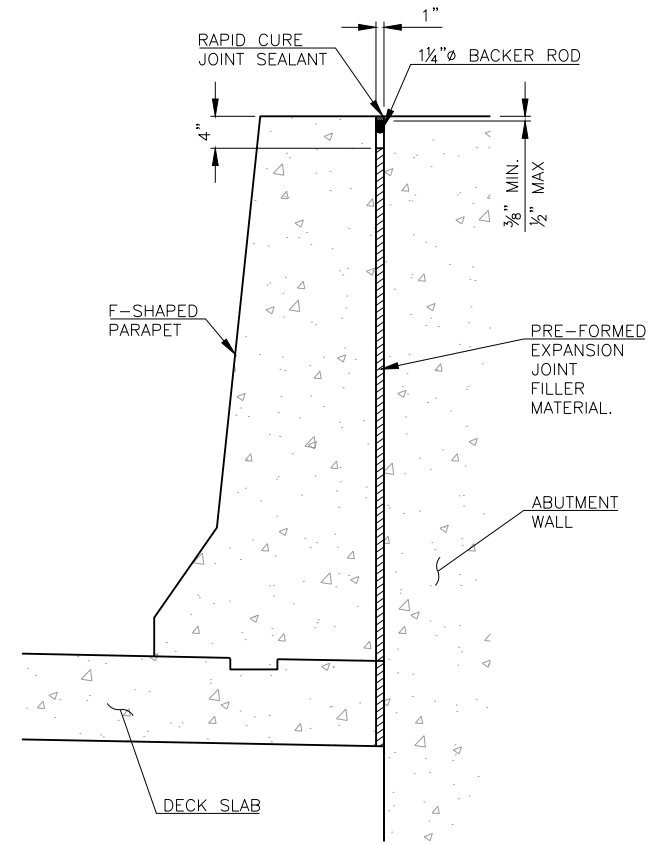
SECTION A

NOTE:
FILL SPACE BETWEEN THE F-SHAPED PARAPET, APPROACH SLAB, AND ABUTMENT WALL WITH PRE-FORMED EXPANSION JOINT FILLER MATERIAL.

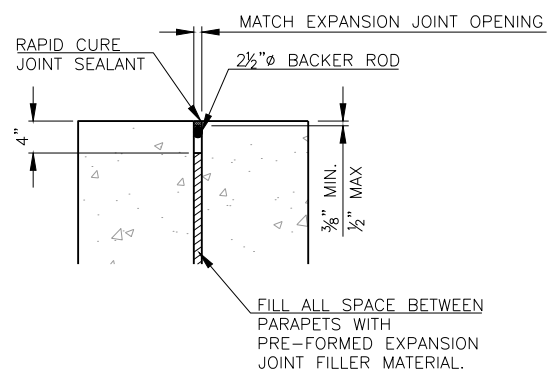
SEAL THE VERTICAL JOINT AT THE FRONT FACE OF THE ABUTMENT FROM THE BOTTOM OF THE DECK SLAB TO THE TOP OF THE ABUTMENT WALL.

SEAL THE VERTICAL JOINT AT THE BACK FACE OF THE ABUTMENT FROM THE TOP OF THE ABUTMENT BACKWALL TO THE TOP OF THE ABUTMENT WALL.

SEAL ALL JOINTS AS SHOWN IN SECTION A WITH BACKER ROD AND RAPID CURE JOINT SEALANT. ALL COST INCLUDED IN OTHER ITEMS OF WORK.



SECTION B



SECTION C

DO NOT PLACE THE CONCRETE FOR THE DECK SLAB OR APPLY OTHER MASSIVE LOADS TO THE BEAMS UNTIL THE CONCRETE IN THE DIAPHRAGMS HAS BEEN IN PLACE A MINIMUM OF 10 DAYS OR AT THE DISCRETION OF THE ENGINEER. THE ENGINEER MAY APPROVE SHORTENED TIME IF THE BEAM AND DIAPHRAGM CONCRETE HAS ATTAINED 80% OF THE SPECIFIED COMPRESSIVE STRENGTH.

NOTE:
FILL SPACE BETWEEN THE F-SHAPED PARAPETS, WITH PRE-FORMED EXPANSION JOINT FILLER MATERIAL.

SEAL THE VERTICAL AND TOP JOINTS OF THE PARAPETS.

SEAL JOINTS AS SHOWN IN SECTION C WITH BACKER ROD AND RAPID CURE JOINT SEALANT. ALL COST INCLUDED IN OTHER ITEMS OF WORK.

DESIGN	T.A.C.	OKLAHOMA CITY BOULEVARD OVER CLASSEN BLVD.	OKLAHOMA COUNTY BRIDGE A & B
DRAWN	K.E.B.		
CHECKED	T.A.C.		
APPROV.	T.A.C.		
SQUAD	CEC		

LONGITUDINAL SECTION

JOB PIECE NO. 17428(88) SHEET NO. 94